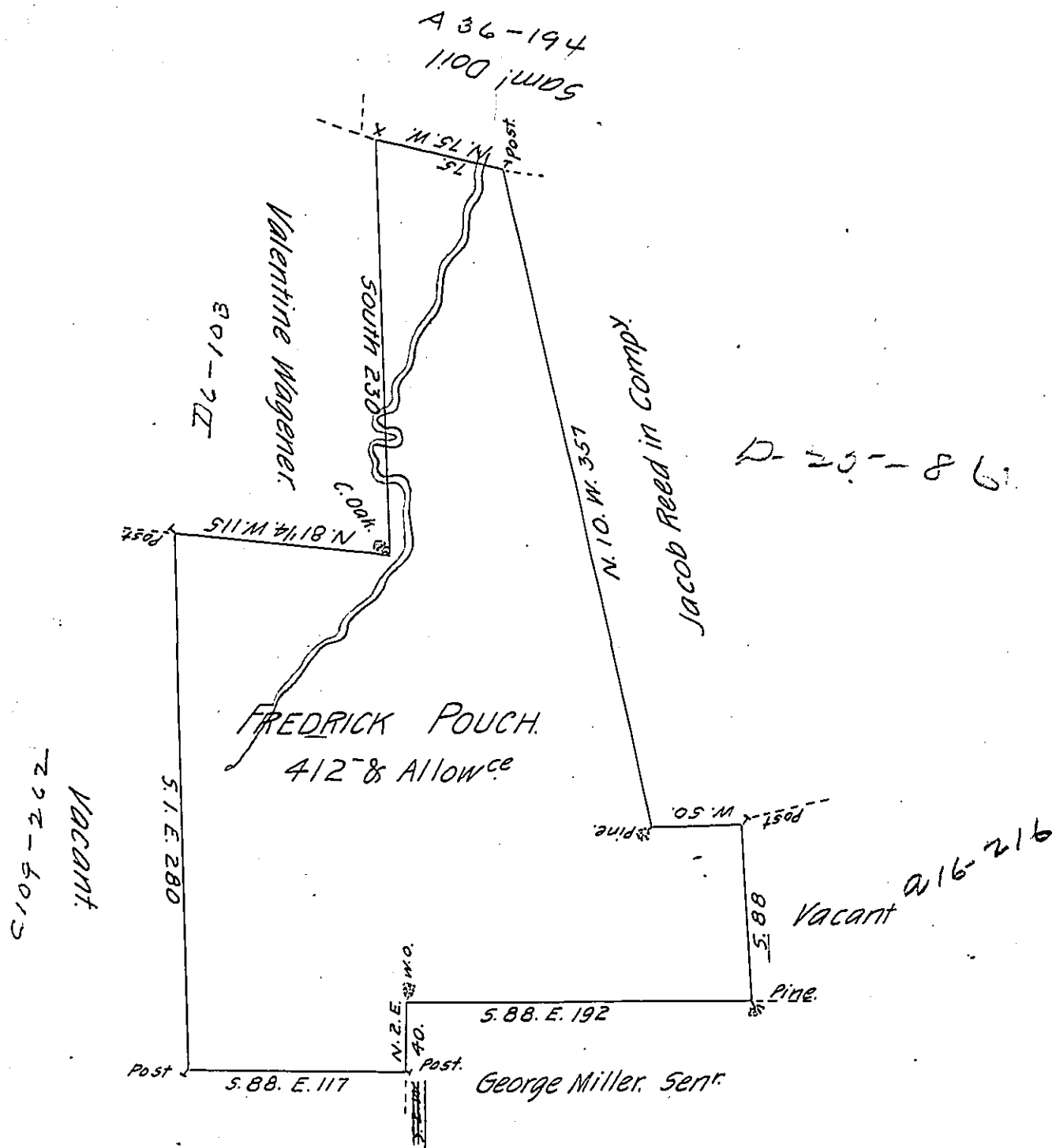


FORM No. 1.



Draught of a tract of land Called _____ Situate on the Waters of Shamoken Creek Joining land of Valintine Wagener and others in Catawissey Township, Northumberland County. Containing four Hundred & twelve acres & Allow^e of Six & Cent for roads &c. Surveyed for Frederick Pouch the 3^d Day of May 1786 in in Pursuance of a Warrant Dated the 1st Day of Dec^r 1785.

by W^m Gray, D. S.

*To John Lukens, Esq^r }
Surv^r. Gen! }*

IN TESTIMONY that the above is a copy of the original remaining on file in the Department of Internal Affairs of Pennsylvania, made conformably to an Act of Assembly approved the 16th day of February, 1833, I have hereunto set my Hand and caused the Seal of said Department to be affixed at Harrisburg, this second day of May 1906.

Geo. B. Pennington
Secretary of Internal Affairs.